

## SEA GUARD II DCP - DOPPLER CURRENT PROFILER

For almost 50 years and more than 20 000 instruments used worldwide, Aanderaa Data Instruments is synonymous with quality, electronically and mechanically robust and reliable in all ocean environments.

SeaGuardII DCP is a scalable, easy to use current profiler. Its flexibility makes it the perfect instrument to address all scenarios of ocean observations and monitoring.

SeaGuardII is a smart data hub that combines the SeaGuard electronics with the advanced management firmware of Aanderaa SmartGuard data hub offering impressive capabilities. Combined with the newly developed Doppler Current Sensor, DCPS600, it forms the SeaGuardII DCP.

### Unique extendable features

- Unique sensor network features
- Easy connection of AiCAP sensors
- Integration of 3rd party analog sensors
- RS232/RS422 inputs with power control

### Profile flexibility

- User selectable broadband and narrowband modes
- Several profiles simultaneously
- Surface referred columns
- Surface current in top cm layer

### Perfect instrument for buoy and system applications

- Unique motion compensation algorithms
- Modem support for direct connection to radio, GPRS, GOES, GSM or Iridium
- Weather station (through serial connection)
- Reduced transmission cost
- Store full datasets and transmit selected datasets
- Recording and transmission interval may be scheduled independently
- Automatic retransmission of missing datasets

### Longer deployment time

- 24 months autonomous deployment with 30 minutes sampling
- Reduced power consumption (broadband technology)
- Increased battery capacity; up to 70Ah internal
- Optional user assembled battery

### Additional features

- Double the measuring range with a single instrument; connect two plug and play DCP sensors
- Measure in the blanking zone combined with a single point current sensor

### LED indicator

Visual confirmation of the instrument status

### User friendly set up and data analysis

Predeployment configuration software:

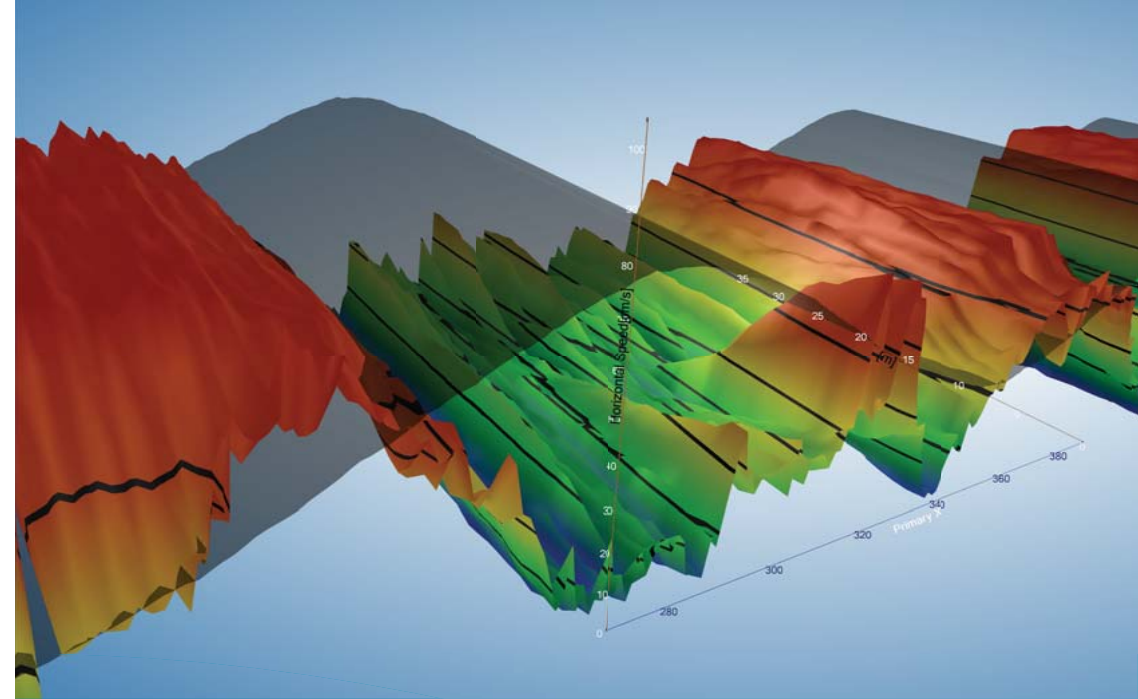
- Real Time Collector
- USB, RS232 / RS422 connection
- Device layout
- Control recording
- Status monitoring

Post processing software: Data Studio

- Less than one minute from full data overview with table overview, 2D and 3D graphs, export function

Real time web based display - GeoView:

- Both real time and historical data in graphs
- Data storage and retrieval from included database
- Several stations simultaneously



# SeaGuardII DCP

## 600kHz Doppler Current Profiler



### Introducing SeaGuardII DCP:

- Multiparameter Doppler Current Profiler
- Scalable platform - from stand-alone to observatory hub
- Optimal flexibility in programming of data collection
- Intelligent compensation for non-ideal environments
- Increased deployment time - up to 2 years with 30 min. interval
- Smart data quality control
- Secure data from site to the office
- Modem support

## AANDERAA DATA INSTRUMENTS AS

Sanddalsringen 5b, P.O. BOX 103 Midtun  
N-5828 Bergen  
Norway

**Phone:** +47 55 60 48 00

**Fax:** +47 55 60 48 01

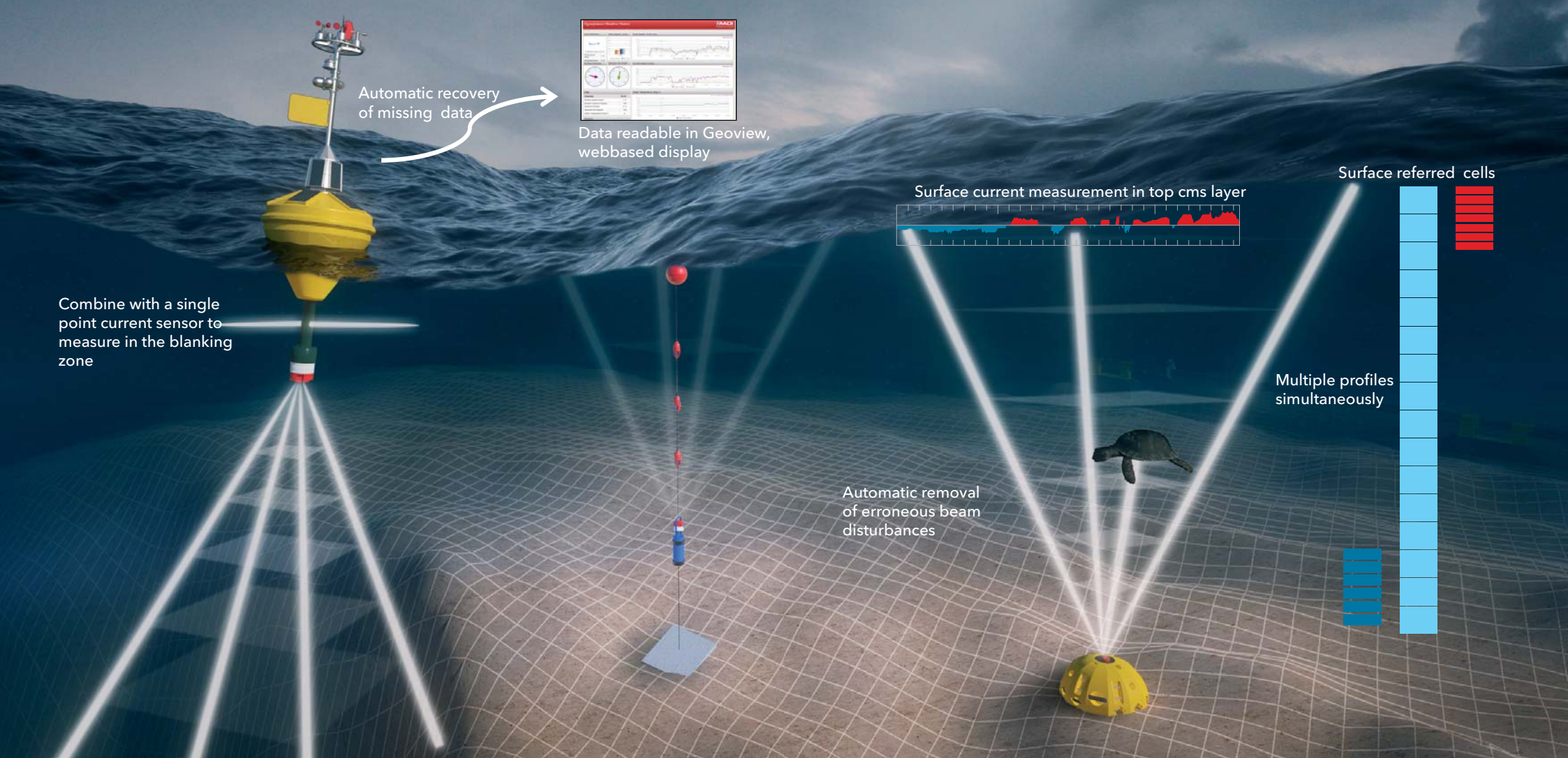
**E-mail:** [aanderaa.info@xyleminc.com](mailto:aanderaa.info@xyleminc.com)

**Internet:** [www.aanderaa.com](http://www.aanderaa.com)

**AANDERAA**

a xylem brand

# The new SeaGuardII DCP - 600 kHz Doppler Current Profiler



## BUOY

- Lower cost by removing the need for additional logger; SeaGuardII is the system data hub
- Lower transmission cost by intelligent transmission interval settings
- Store full datasets and transmit reduced amount of data
- Direct connection and control of modems; radio, GSM, GPRS, Iridium, AIS, GOES

## MOORING LINE

- Upside down mounting
- Full flexibility of additional parameters on top end plate or distributed in the water column using AiCaP CANbus
- 2 serial inputs with power control
- 4 analog inputs
- Plug and play wave, tide, oxygen, conductivity, temperature and turbidity sensors

## BOTTOM MOUNTED

- Measure closer to the bottom by combining with Aanderaa's single point current sensor
- Refer current cells to the surface to follow water level changes
- Multi column capabilities
- Surface current in top cms layer
- Additional battery capability

## SEAGUARDII DCP

- User selectable broadband or narrowband modes
- Automatic flagging of bad data
- Multi sensors groups with individual recording interval
- Same power consumption in burst and spread mode
- Advanced tilt compensation for each ping to achieve true current measurements