

# SONARWIZ FOR SUB-BOTTOM PROFILERS

*by Chesapeake Technology*

## SEAFLOOR MAPPING: EASIER, FASTER AND SMARTER, WITH SUPPORT YOU CAN COUNT ON

Explore sediment layers in-depth with SonarWiz for Sub-Bottom Profilers with real-time data acquisition and post-processing modules. The sub-bottom profiler package also includes navigation, fathometer and magnetometer inputs so you get a broad perspective of a survey area. Mid and post-survey digitizing tools and interactive visualization tools enable users to preview and audit data ensuring all necessary data was collected before concluding a survey. SonarWiz saves you time with its automatic bottom tracker, semiautomatic seabed classification algorithm, and isopach and thickness tool. A full spectrum of export options, including a wide variety of supported GIS and CAD systems, including MicroStation, AutoCAD, ArcGIS, Google Earth and Adobe Acrobat 3D enable you to further use and process your raw and processed data.

### REAL-TIME DATA ACQUISITION OPTIONS

EdgeTech 2000 (SS & SBP), 3000, 3200, FSSB; GeoAcoustics GeoPulse Analog and GeoPulse Plus Digital; Innomar SB, Klein 3000 (SS & SBP), Knudsen SB, Odom Echotrac CVM, SyQwest Hydrobox, Stratabox, Bathy PC, Bathy 2010PC, Teledyne-Benthos Chirp III, and 1625, Teledyne-Hugin AUG. Additionally with an analog box, SonarWiz is compatible with the Sparker, Boomer, GeoAcoustics and Datasonic Bubble Pulser.

### POST-PROCESSING FILE COMPATIBILITY

SEG-Y, XTF, JSF, GCF, COD, SDF, RAW, V4Log, ODC, KEB

## LEARN SONARWIZ

**A variety of options are available for learning SonarWiz.**

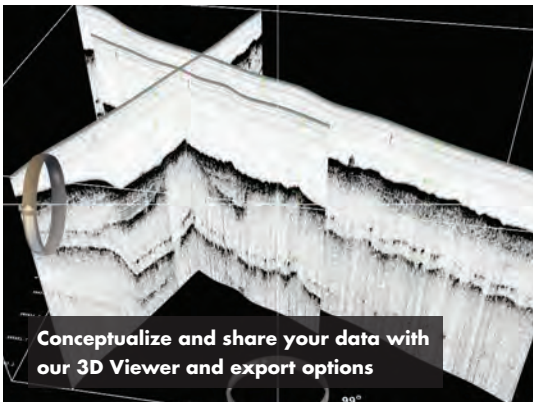
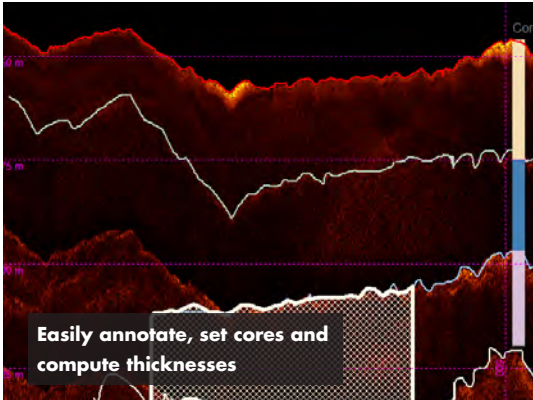
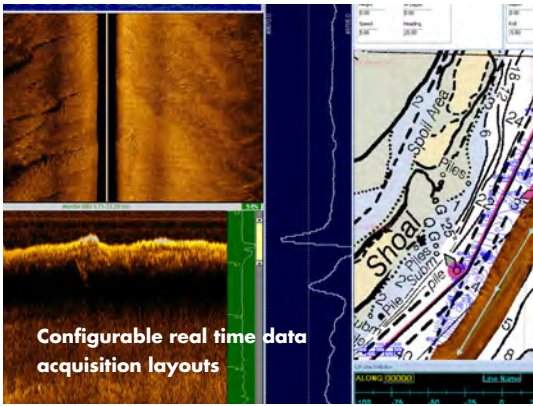
- On-Site hands-on training tailored to your needs at your location
- Pre-scheduled hands-on training set throughout the year at locations around the world
- Topical information is provided through quarterly company webinars

## YOUR EMA

We're constantly upgrading SonarWiz, whether its to add or refine features, expand compatibility with other software and hardware, or integrate new and advanced algorithms to better process your data. While you'll always have the version of SonarWiz that you purchased, EMA license renewals give you access to the latest version of SonarWiz, quarterly release notes and 24/7 technical support.

# FEATURES

- Bottom track data manually or use automated tools
- Correct sub-bottom data for tide and draft variables using the Datum Align to Bathy Grid feature
- Fix navigation data with NavInjectorPro
- Polish your data with the Heave Compensation Swell Filter
- Organize acoustic reflectors with annotations
- Compare reflectors and generate thickness vectors with the Isopach and Thickness Tool
- Interpret your data with zoom, pan, measurement and image scaling tools
- Annotate the data using the Core Mapping Tool
- Visualize multiple lines, DTMs, sonar mosaics, xyz amplitude clouds, digitized features and analyze intersections in the 3D Viewer



**FREE  
TRIAL**

Interested in trying out **SonarWiz**? Fill out the quick form at [chesapeaketech.com/products/trialrequest.php](https://chesapeaketech.com/products/trialrequest.php)

**SONARWIZ**

**CHESAPEAKE  
TECHNOLOGY**

[chesapeaketech.com](https://chesapeaketech.com)