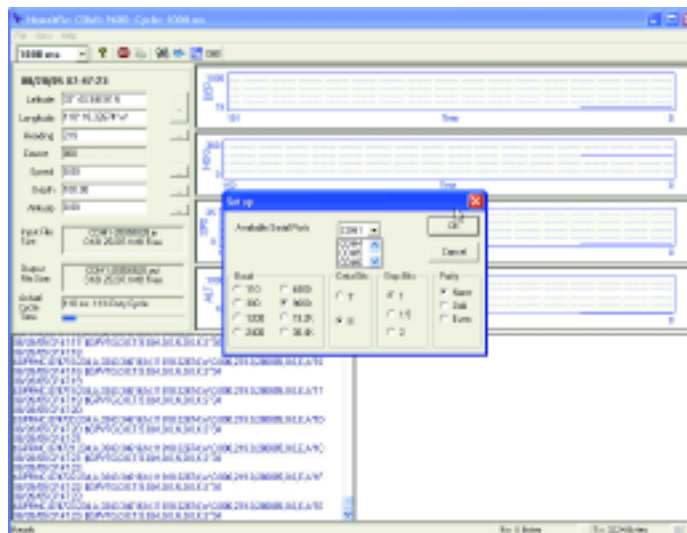
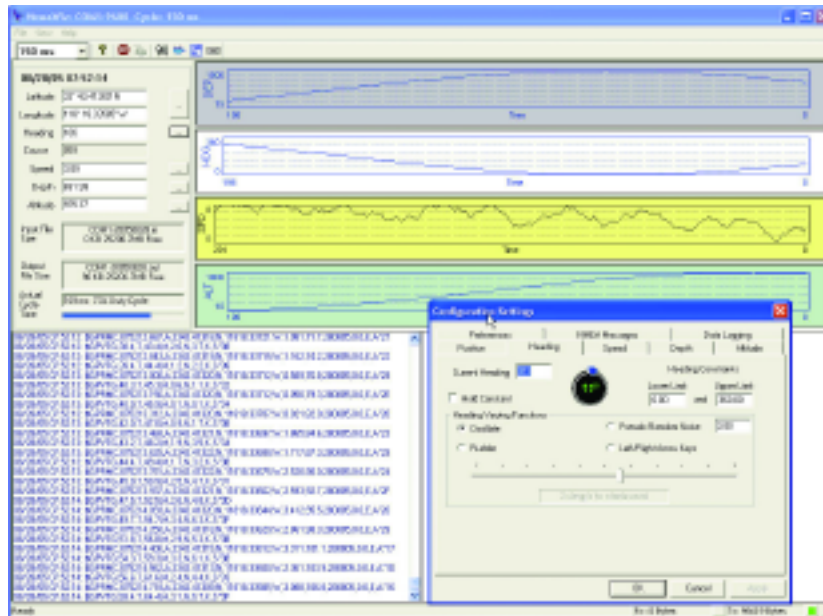


## NmeaWiz: Flexible navigation simulator

NmeaWiz is an NMEA-0183 real-time message generator and testing tool. NmeaWiz can emulate the real-time NMEA-0183 output of GPS receivers, echo sounders, gyros and compasses while providing the user complete control over variation of position, speed, heading and depth. Use NmeaWiz anywhere in any test application that requires dynamic GPS, heading or fathometer input. NmeaWiz facilitates testing of equator, map projection zone boundary and international dateline crossings.

*Message output includes GGA, GLL, RMA, RMC, DBT, DPT, VHW, HDT, VTG, ZDA, MWD, MWV, DTM, GNS, SBP, DBS and others. Supports COM1-16.*

*Runs on Windows NT/95/98/2K/XP. /VISTA/Windows7*



# Chesapeake



650.967.2045

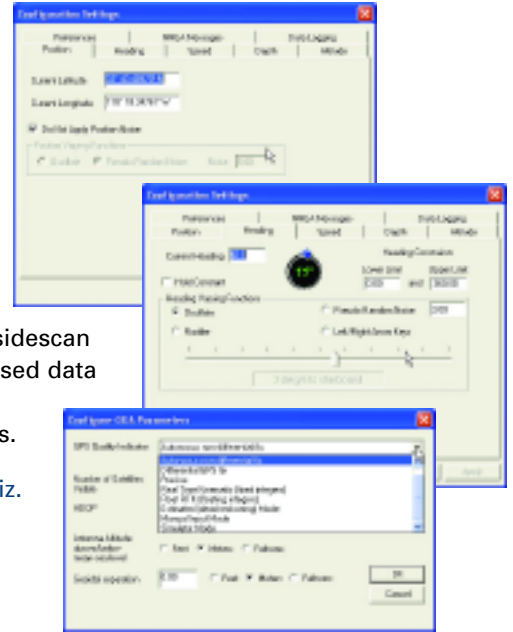
[www.chesapeaketech.com](http://www.chesapeaketech.com)

NmeaWiz: The software that turns your PC into a virtual GPS receiver, compass and fathometer.

## With NmeaWiz, you are in control...

Working like your own virtual GPS receiver, compass and fathometer all rolled into one, NmeaWiz generates the NMEA-0183 messages that allow you to stress test your navigation and data acquisition software. Find out now how your software responds to the effects of erratic speed, heading and depth, high or low data rates, UTM or other map zone boundary crossings, equator crossings, date line crossings. Do you need to test or evaluate NMEA software such as chart plotters, hydrographic, sidescan sonar, seismic reflection or any other NMEA based data collection software? Find out how your system responds to multiple simultaneous GPS sensors.

If you use the NMEA output, you need NmeaWiz.



*Simply the best  
NMEA simulator.*

## Software Features...

- ➔ Intuitive easy-to-use Windows graphical user interface.
- ➔ Supports COM1-COM16 as well as logging to hard drive.
- ➔ Simulates the output of GPS receivers, fathometers and heading sensors.
- ➔ Runs under Windows NT/95/98/2000/XP/VISTA/Windows7
- ➔ Multi-instance feature allows you to configure one port as a GPS, another as compass and still another as a fathometer.
- ➔ Supports GGA, GLL, RMA, RMC, DBT, DPT, VHW, HDT, VTG, ZDA, MWD, MWV, DTM, GNS, SBP, DBS and other NMEA-0183. Records output from any RS-232 device and provides 'clocked' playback feature.
- ➔ Create NMEA test data files for driving demos—Great for trade shows!
- ➔ Supports the NMEA-0183 1.x and 2.x standards.
- ➔ Complete control over position, speed, heading and depth.
- ➔ Output rates from 50ms to 10s.
- ➔ Baud rates from 2400 to 38400

*Don't see your message here? Call us, we'll add it.*

*Single user license: and site licenses available.*



Chesapeake Technology, Inc.  
1146 Kathy Way  
Mountain View, CA 94040 USA

voice: 650.967.2045

fax: 650.961.6734 (current FAX 650-903-4500)

sales@chesapeaketech.com

www.chesapeaketech.com