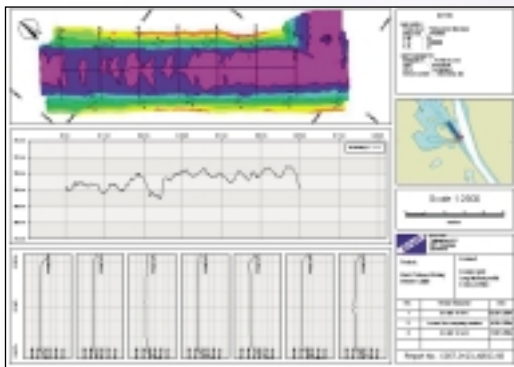
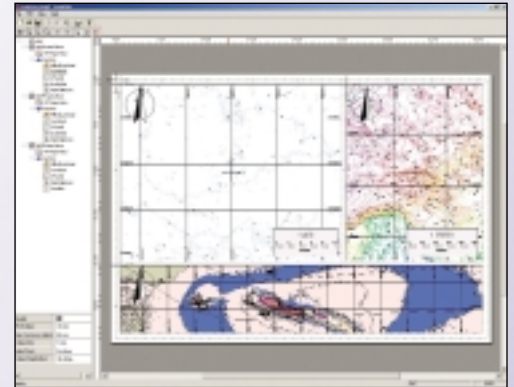


NaviPlot

Fair Sheet Production Software

APPLICATIONS – The NaviPlot software provides lay out of survey data on fair sheet for printing on any Windows enabled printer or plotter. The fair sheet comprises various elements and data types, and allows mixing of various mapping data in different frames for overlay with scale bar, colour palette, text, XY-grid and north arrow. NaviPlot features sorting of elements to allow more important elements stand out on top of less important.

FRAMES – The lay out is controlled by use of frames with the primary frame being the main frame around the whole paper. New frames are created either by mouse click-and-drag or by typing in frame values. Existing frames can freely be changed or deleted. The frames are organized in a tree structure, so that every frame, except the main frame, has a parent frame. For every frame it is possible to inherit properties from its parent frame and create own properties. Created frame layouts can be stored as default templates.



FRAME PROPERTIES – The properties of a frame comprise among others: scale, origo, projection & datum, size of frame, position of frame, pens used for drawing, name, width, height, background mode, and line style. The frame behind a new frame will automatically be selected as the parent frame.

MAP VIEW – A map view is a frame containing XY plots. This view allows display of various data types, e.g.: vector lines (display lines, runlines, dxf/dwg), contour lines with filling, bathy plot, geographical bitmaps (i.e. geotif), grid, long profiles, cross profiles, coverage, side scan mosaic. All map views are added as layers providing options like: stacking of layers, change of priority, delete layer, disable/enable display of layer. Coordinates are in XY or Latt/Long.

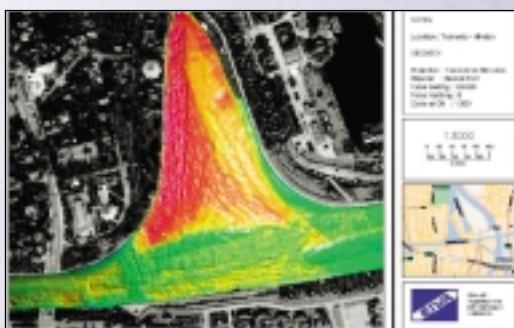
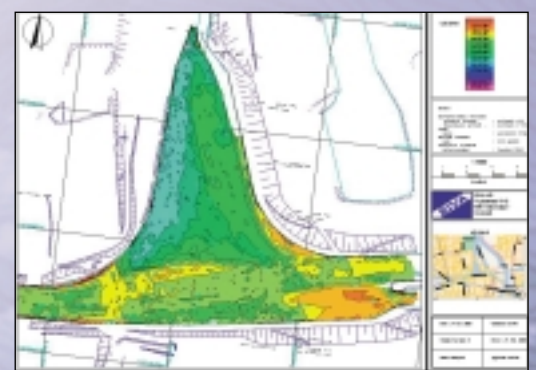
SCALEBAR – A scale bar is aligned to or centered within frame edges and has the following properties: size, text height, text label format and steps.

NORTH ARROW – A north arrow is aligned to frame corners and is selected from a variety of arrows available.

COLOUR PALETTE – A colour palette is required where coloured contours are part of the plot, thus marking the colours of depth ranges on the drawing.

GRID – An overlay grid shows the XY- or Lat/long lines for a frame. Each label can be hidden if they overlap other labels. The labels are aligned to the frame edges. It is possible to align label over, under or through grid line. The grid can be displayed as lines or cross.

IMPORT FILE TYPES – The most commonly used data formats are supported comprising a/o: contours (*.coa, *.cob), display/run lines (*.cur, *.dis, *.rln, *.rlx, *.rie, *.dxf, *.dwg), Geographic bitmaps (Geotif).



EXPORT FILE TYPES – The data formats supported comprise a/o: vector drawing (*.dwg, *.dxf).

PRINTING – Printing is controlled through standard Windows functions.

CALIBRATION OF PRINTER – As most printers do not provide the required accuracy to obtain true scale printing, NaviPlot features printing of a calibration page for determination of exact dpi value for a given printer.

PRODUCT SUITE – The EIVA software product suite comprises software for all aspects of marine surveying, from integrated navigation and data acquisition to post-processing and final charting. Full continuity is provided between the individual software packages. Through a flexible interface the individual software packages also allow for use with 3rd party software. The EIVA software product suite is written for Microsoft Windows NT, Windows 2000 and Windows XP and the user interface adheres to The Microsoft Interface Guidelines. All EIVA software products are made according to ISO9001 principles for system design.

Technical Specifications

Hardware (recommended)

- Pentium 4 processor
- 512 MB RAM
- 32 MB graphics RAM

Operating System

- Windows NT, Windows 2000 or Windows XP

Frame Properties

- Scale
- Origo
- Projection & datum
- Size of frame in [mm]
- Position of frame in [mm]
- Pens used for drawing
- Name
- Width
- Height
- Background Mode
- Line style

Map View Display Data

- Vector lines
 - Display lines
 - Runlines
 - dxf/dwg (AutoCad)
- Contour lines with filling
- Bathy plot
- Geographical bitmaps (i.e. geotif)
- Grid
- Long profiles
- Cross profiles
- Coverage
- Side Scan Mosaic

Import File Types

- Contours
 - *.coa
 - *.cob
- Display/run lines
 - *.cur
 - *.dis
 - *.rln
 - *.rlx
 - *.rle
 - *.dxf
 - *.dwg
- Geographical bitmaps
 - Geotif

Export File Types

- Vector drawing
 - *.dwg
 - *.dxf

